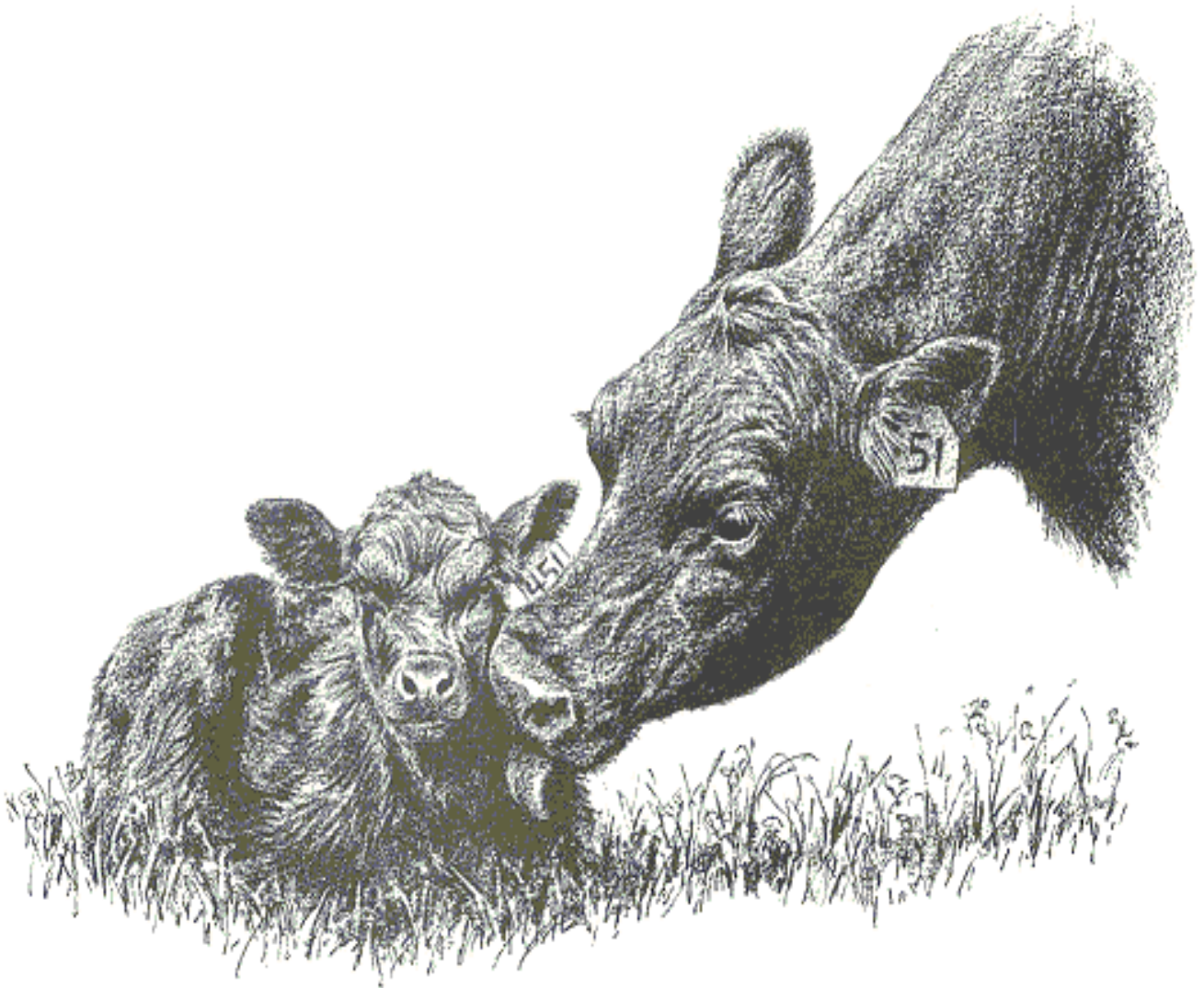




**SA
STUD BOOK**

**PRODUCTION RECORDING WITH
SA STUD BOOK LOGIX BEEF**



PRODUCTION RECORDING WITH SA STUDBOOK

LOGIX BEEF

WHAT IS PRODUCTION RECORDING?

The result of production recording is a selection and management tool for more profitable beef production. Production systems and breeding selection goals can be executed and monitored by production recording. The saying: **“To measure is to know”** is more relevant in beef production now than ever before and is crucial to the efficient management of your herd.

WHAT IS THE AIM OF LOGIX BEEF PRODUCTION RECORDING?

- To make objective **production data and breeding values** available to the beef breeder in order to identify and select the best performing animals.
- To provide farmers with **value added management tools** for improved on farm management.
- To use the information obtained from production recording to improve the **biological and economical efficiency** of beef production.

STAGES OF PRODUCTION RECORDING

Birth notification – Mating and calving data

The reproduction and ease of calving properties of cows and bulls are evaluated by using mating and calving data. Besides the recording of **calving/birth** information, there is also provided for recording of matings, AI, pregnancy detection, ease of calving, dead calves and abortions. Animals born in the same season and under the same feeding conditions should be recorded together in the same **contemporary group** (evaluation group). Birth notifications have to be recorded within 30 days.

Wean weights (Former Phase A2) between 151-250 days

Mothering abilities and **efficiency** of cows, as well as the prewean **growth rate** of the calves are evaluated through cow weights and the wean weights of the calves.

Post wean weights:

On-farm recording (Former Phase B1) Year weights between 251-450 days
 (Former Phase B2) 18 Month weights between 451-634 days

Post wean growth rate of young heifers and bulls is evaluated under normal farm conditions by recording 1 year and 18 month weights.

Central Bul Growth Test (Former Phase C) *optional*

Post wean growth rate and **feed conversion efficiency** of young bulls are evaluated by using a private or central bul test station where animals are fed individually. The emphasis here falls on the evaluation of **efficiency of feed conversion**.

On-farm-bul-growth-test (Former Phase D) *optional*

Post wean growth rate of young bulls are evaluated by measuring the growth rate under controlled circumstances on the farm of a member or private institution.

The following measurements are also provided for the post wean phase

- Body measurements (shoulder height, body length, skin thickness and scrotal circumference)
- Ultrasonic measurements (RTU) for the evaluation of certain carcas and meat quality traits
- Linear scoring of functional traits
- Pelvic measurements

WHO PARTICIPATES IN PRODUCTION RECORDING?

All **stud breeders** and commercial producers of beef and dual purpose cattle.

All you need to participate in production recording is a trustworthy cattle scale and basic handling facilities. All animals in the herd must be identified and all calves must be recorded at birth.

WHICH OF THE WEIGHTS ARE COMPULSORY FOR RECORDING?

Participation in at least the Reproduction and Wean phases is compulsory. The only obligatory recordings in these phases are calving data (calf number, birth date and sex) and wean weights of all calves. Cow weights at birth and weaning weights of the calves are compulsory in certain breeds. Participation in the post wean phases is strongly encouraged. It is the breeders' own choice in which phases to participate and which measurements to record (1 year and/or 18 month weights).

WHAT IS EXPECTED OF ME AS A BREEDER?

SA Studbook recommends that the following data/weights be recorded:

- Matings, embryo flushing and AI data (mating lists) *optional but compulsory in certain breeds*
- Birth notifications and calving data *compulsory*
- Birth weights within 3 days after birth *optional but strongly encouraged*
- Wean weights at \pm 7 months *compulsory*
- Cow weights at calving and weaning of calves *optional but compulsory in certain breeds*
- 12 and/or 18 month weights (all animals not sold, culled or part of a bull growth test) *optional*
- Choosing a **contemporary group**: Animals raised under the same conditions have to be evaluated in the same group. The age difference between the oldest and youngest animal in this group may not exceed a 100 days.

WHERE DOES THE DATA GO TO

Data can be submitted by creating an electronic file through the farm software program (eg. BenguFarm Beef) and sending it to edata@studbook.co.za. Breeders can also submit data **directly to Logix** (www.logix.org.za) provided the internet connection is functioning well. Breeders working off preprinted weigh lists should fax it to: 051 447 3964 or post it to

SA STUDBOOK

PO BOX 270

Bloemfontein

9300

REPORTS AVAILABLE ON LOGIX

- Administration/Selection list
- Weigh list (import document)
- Wean and post wean reports
- Cow progeny reports
- Breeding herd selection reports
- Herd list
- Growth test, Body measurements and RTU reports and performance certificates
- After each genetic analysis of a breed new **genetic herd reports** are available with breeding values of all the active animals and bulls used in the herd
- Pedigree reports including production records and breeding values

HOW DO BREEDERS BENEFIT FROM PRODUCTION RECORDING?

- Firstly, data extracted from Logix is an objective **selection tool** to identify inefficient animals for culling and efficient animals for further breeding. This means increased efficiency of production through genetic improvement with minimal extra input.
- Increased efficiency in production through genetic improvement means higher profit margins for the enterprise that makes use of the information and in the end has a positive impact on the whole industry.
- Reproduction and production results provide important management information to monitor management practices and to make changes where necessary.
- Buyers tend to pay more for superior animals where the information of that animal is available which makes production recording a **value adding marketing instrument** for a breeder.
- Pedigree information is used to calculate **inbreeding coefficients** that are used to monitor the rate of inbreeding in a breed and individual animals. Pedigree information enables the breeder to avoid related matings.
- Production data and pedigree information are used to calculate breeding values for animals by using the sophisticated mixed model methodology. Breeding values make it possible to determine the genetic merit of an animal across herds, years, seasons, ect within a breed.
- The benefit of Mixed model methodology (like BLUP) is that **genetic trends** (and environmental trends) of herds and breeds can be determined over the years. This information makes it possible to evaluate genetic improvement accurately and to adjust breeding strategies where necessary.
- It provides valuable information and statistics on national level to breeders associations and the industry regarding the performance of different breeds/animals under different conditions.

WHY LOGIX BEEF?

- SA Studbook is an independent and unbiased organisation. It provides national as well as international credibility to the data that is especially important to the international export market.
- SA Studbook is ICAR (International Committee for Animal Recording) accredited. All data collection, processing and breeding value calculations comply with the international rules, regulations and standards.
- Regular evaluation of each herd helps to monitor the rate at which a herd is working towards and achieving its selection goals. That way nature and the basic production system can also be taken into account.

- Because data collection and processing of production data occur according to international rules it is **easy to use and understand the data across breeds**. This is especially beneficial to prospective buyers in the industry.
- Logix is supported by 'n competent team of researchers and technical advisors who are busy with **continuous research and development** to ensure that Logix Beef remains on par with international developments and the local industry.
- This team also provides **advice** on all aspects of breeding and animal improvement to the farmer.
- Exceptional performing animals and herds are **rewarded** by SA Studbook annually.
- SA Studbook hosts an annual **Elite Breeding Symposium** where delegates are brought up to date with the national and international developments in the industry and also given the chance to participate in discussions.

CONTACT US

Studbook website: www.studbook.co.za

Logix website: www.logix.org.za

Electronic data: edata@studbook.co.za

Studbook Tel: 051 4100 900

SA STUD BOOK TECHNICAL ADVISORS:

Bloemfontein	Rampie de Wet	rampie@studbook.co.za	083 6316 040
Bloemfontein	Siebert Vermeulen	siebert@studbook.co.za	082 5484 608
Bloemfontein	Gerdus de Klerk	gerdus@studbook.co.za	072 6913 600
Vryburg	Dolf Cloete	dolf@studbook.co.za	082 6603 266
Pretoria	Andries Riekert	andries@studbook.co.za	082 4650 671
Pretoria	Thalia Brameld	thalia@studbook.co.za	071 4931 111
Western-Cape	Chanelle Steenekamp	chanelle@studbook.co.za	072 8364 108
Port Elizabeth	Isolde Viljoen	isolde@studbook.co.za	079 4072 708
Pietermaritzburg	Sarah Roberts	sarahdane@studbook.co.za	076 7247 907

SA STUD BOOK